



COASTAL ENERGY, MODERN WORK

12225 + 12235 EL CAMINO REAL, SAN DIEGO, CA 92130



WHERE OPPORTUNITY MEETS THE HORIZON

Welcome to CVCC, a premier campus set within Del Mar Heights, San Diego's premier coastal community. Here, refined design meets coastal energy, creating a modern, tranquil environment for innovative startups to established industry leaders.

Offering flexible floorplates, a programmed outdoor courtyard, and high-efficiency amenities, the property inspires productivity and connection. With exceptional access to I-5 and SR-56 and steps from upscale retail, dining, and lifestyle destinations CVCC offers the perfect balance of business, wellness, and coastal sophistication.



PROPERTY OVERVIEW

CVCC delivers a service-first campus designed for high-performance teams.

- Outdoor courtyard with fountain and spaces for meetings and collaboration
- Showers and lockers for work + wellness balance
- Building signage opportunities
- Welcoming two-story lobby
- Efficient floorplates and suites to maximize space

NUMBER OF BUILDINGS	2	AVAILABLE SPACE	±55,907 SF
CAMPUS SIZE	±114,308 SF	YEAR BUILT	1998
NUMBER OF FLOORS	2	TYPICAL FLOOR	CLEAR HEIGHT SLAB TO SLAB 14'

HIGHLIGHTS



CAMPUS SETTING

Two-building, ±114,308 SF office campus



FULL BUILDING OPPORTUNITY

Availability options for full building and multiple tenants



OUTDOOR TERRACE

Tranquil outdoor terrace providing outdoor meeting and lounge space



VISIBLE

Prominent building top signage opportunity



FLEXIBLE

Efficient and flexible design for smart space utilization



ACCESSIBLE

Excellent accessibility from I-5, SR-56, and El Camino Real



GO GREEN

Energy-Star labeled building



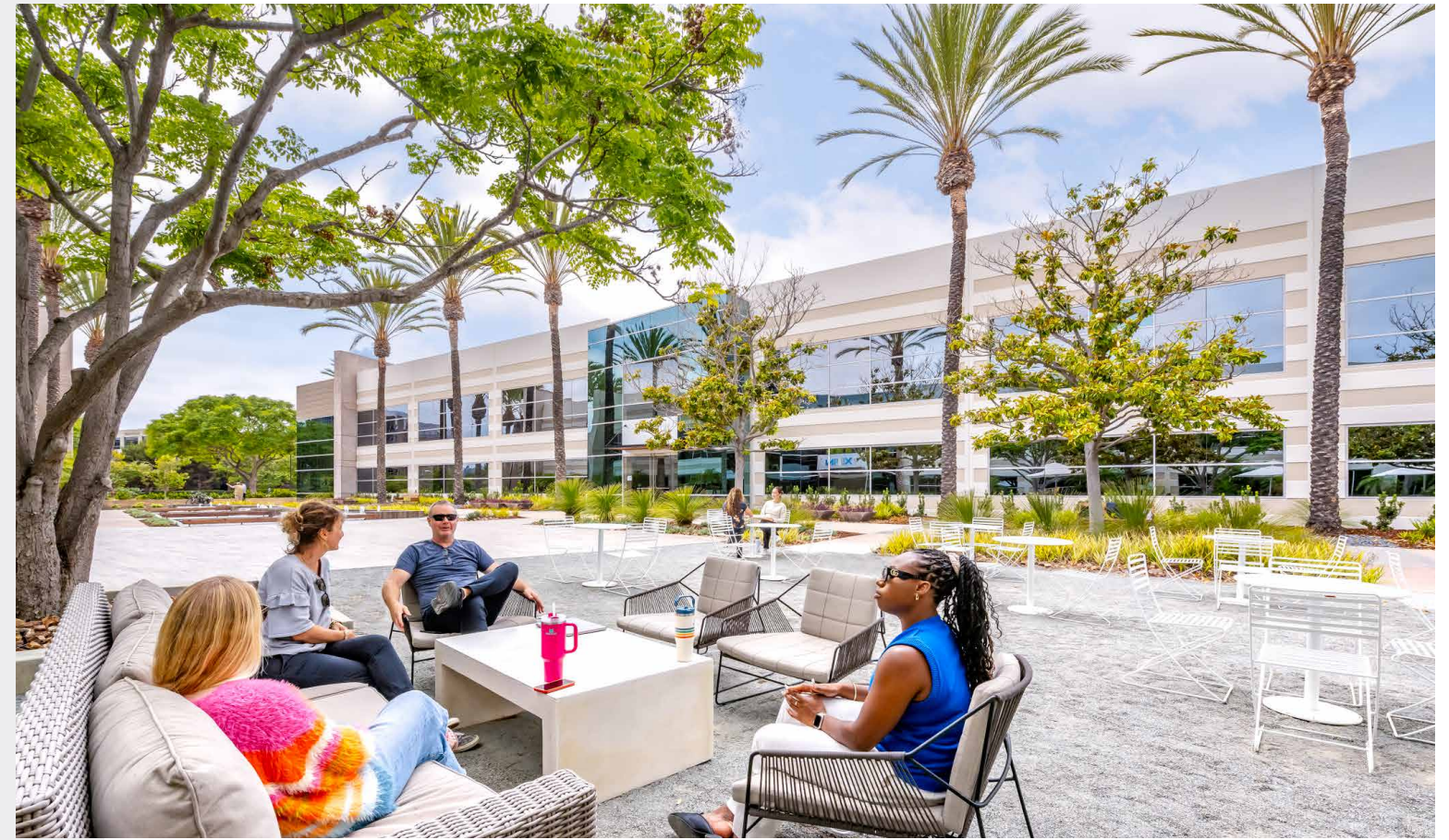
BEST IN CLASS

Top notch ownership with local, responsive building engineers and property management



PREMIUM AMENITIES

Close proximity to the curated collection of dining, shopping and entertainment options at One Paseo, Del Mar Highlands Towne Center, & Piazza Carmel



THE COURTYARD



A modern, multi-story building with a large glass facade. The building is surrounded by a landscaped courtyard with palm trees, walkways, and people. The sky is blue with some clouds. The text 'YOUR NAME HERE' is prominently displayed on the building's facade.

YOUR NAME HERE

BUILDING TOP SIGNAGE OPPORTUNITY

CVCC offers high-impact building top and monument signage opportunities that can be easily seen from well-traveled El Camino Real, delivering a strong individual brand presence and enhance your firm's identity and visibility.

1ST FLOOR

AS-BUILT SPACE PLAN

±28,160 SF (CONTIGUOUS TO ±55,907 SF)



1ST FLOOR

HYPOTHETICAL SINGLE-TENANT SPACE PLAN

±28,160 SF (CONTIGUOUS TO ±55,907 SF)

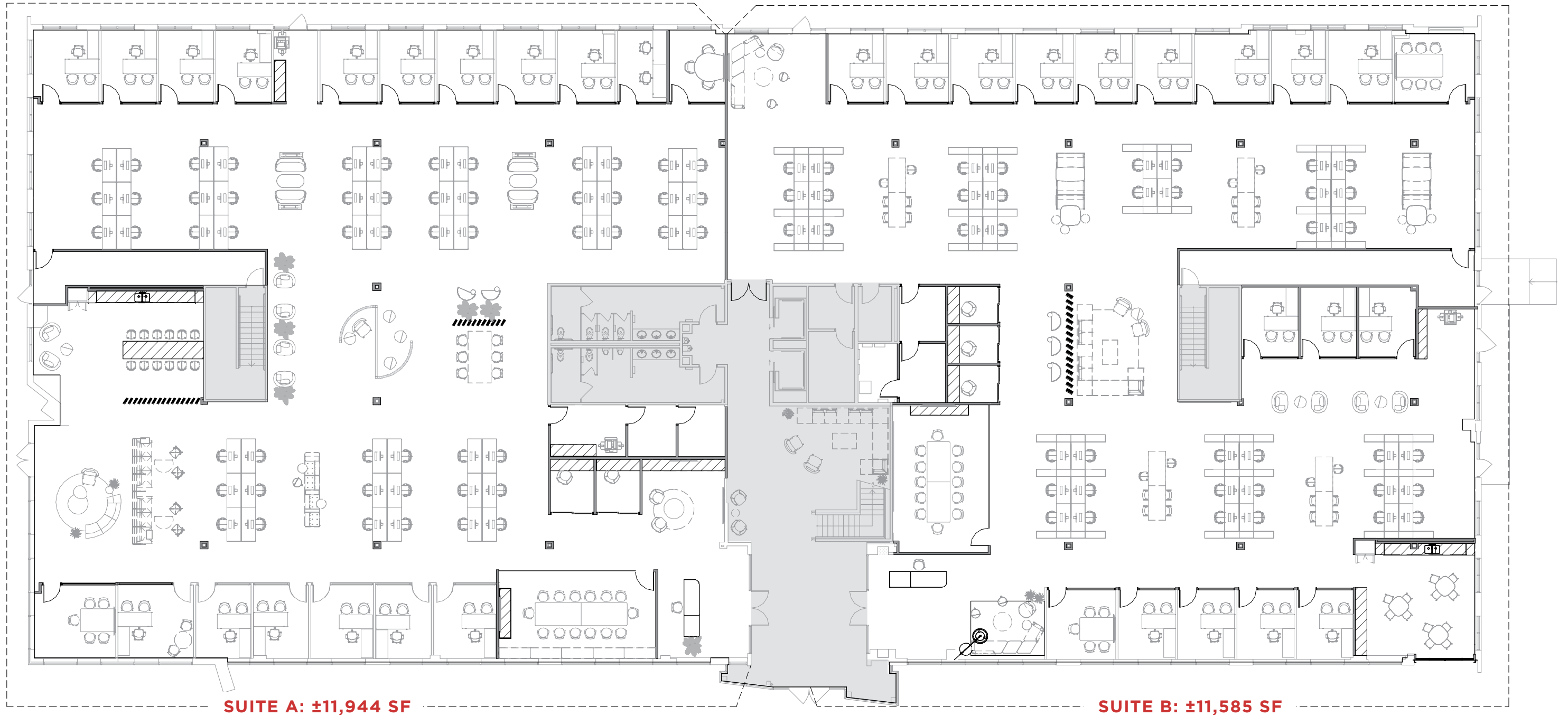


1ST FLOOR

HYPOTHETICAL MULTI-TENANT SPACE PLAN

SUITE A: ±11,944 SF

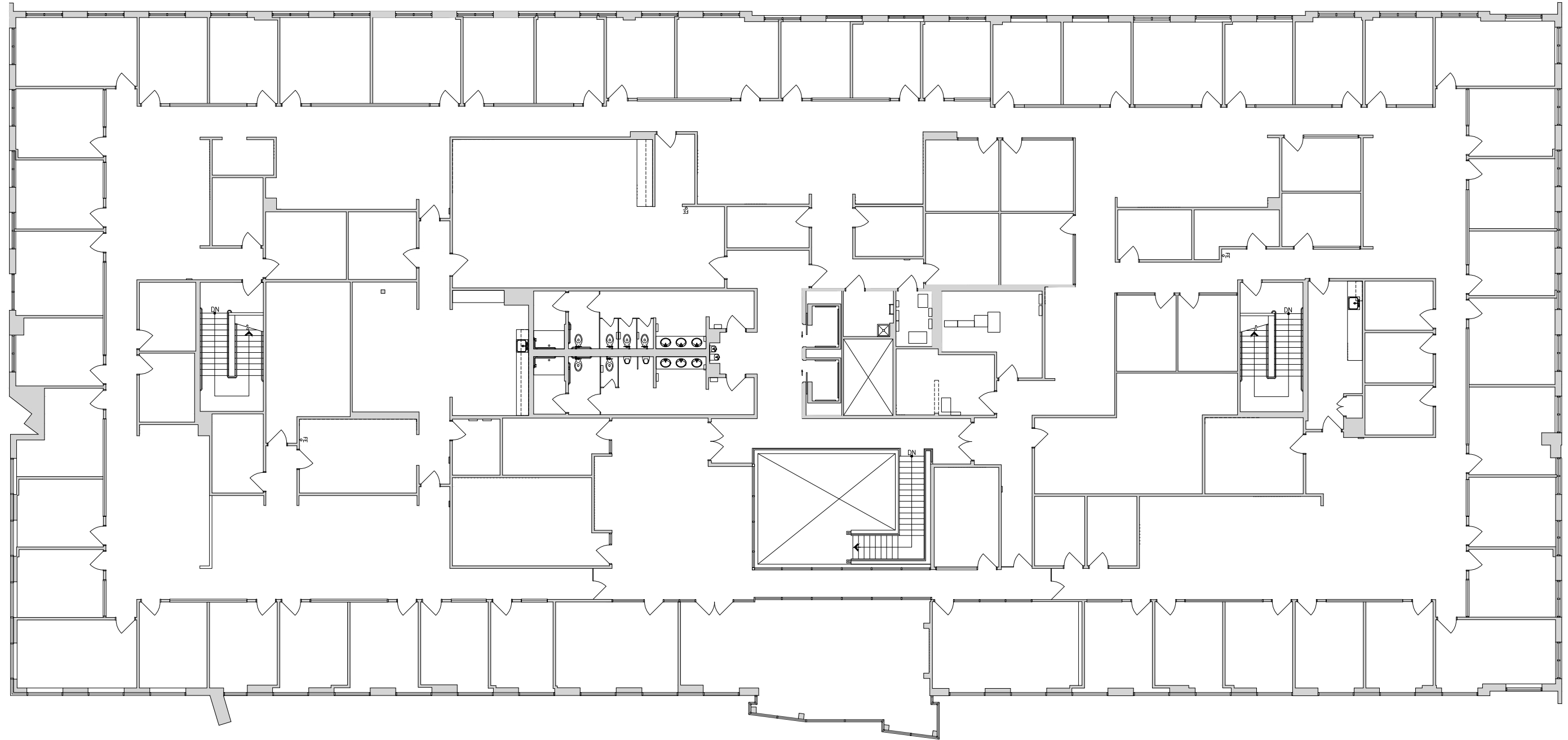
SUITE B: ±11,585 SF



2ND FLOOR

AS-BUILT SPACE PLAN

±27,747 SF (CONTIGUOUS TO ±55,907 SF)



2ND FLOOR

HYPOTHETICAL SINGLE-TENANT SPACE PLAN

±27,747 SF (CONTIGUOUS TO ±55,907 SF)

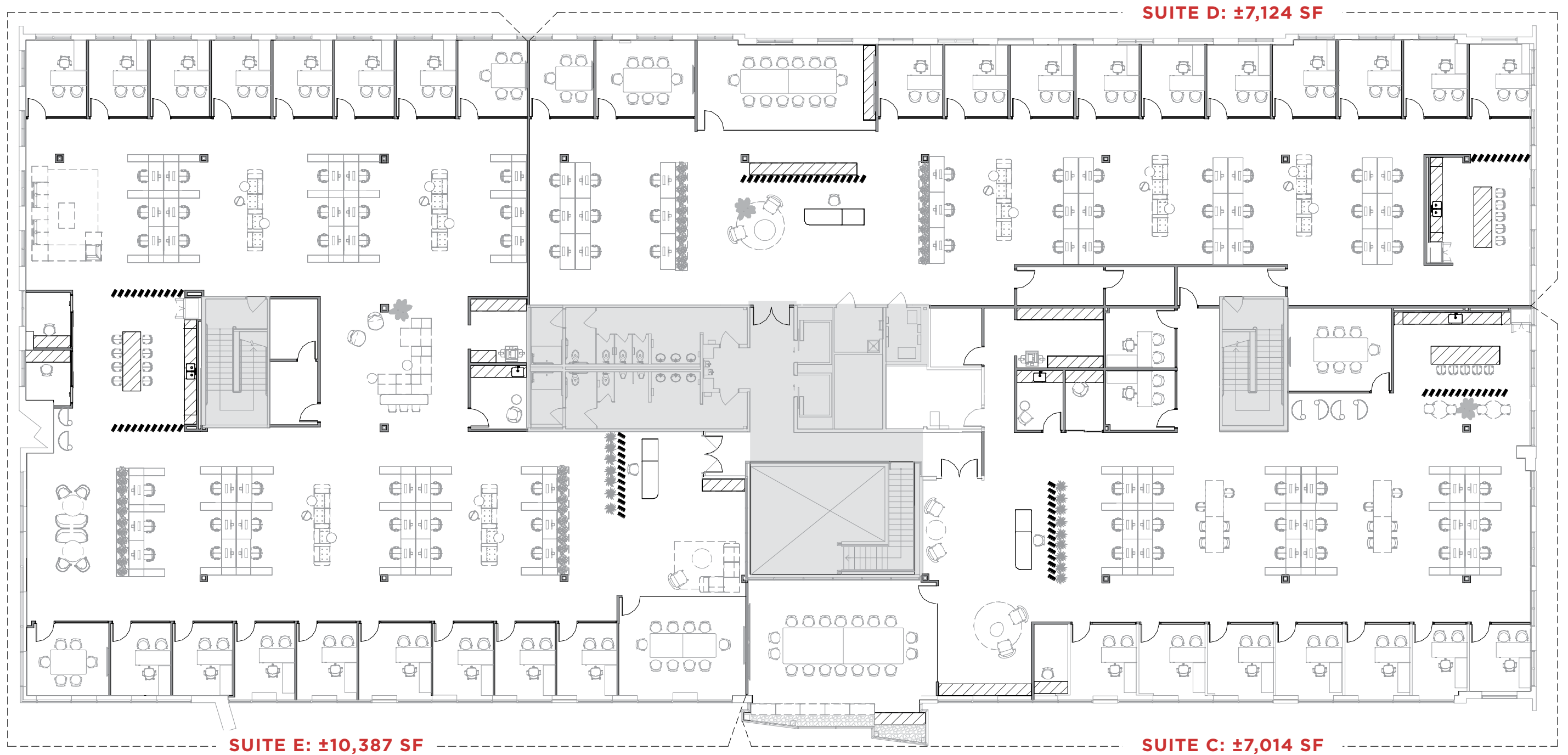


2ND FLOOR

HYPOTHETICAL MULTI-TENANT SPACE PLAN

SUITE C: ±7,014 SF | SUITE D: ±7,124 SF

SUITE E: ±10,387 SF



SURROUNDING AREA

3 minutes to I-5 on ramps

4 minutes to One Paseo

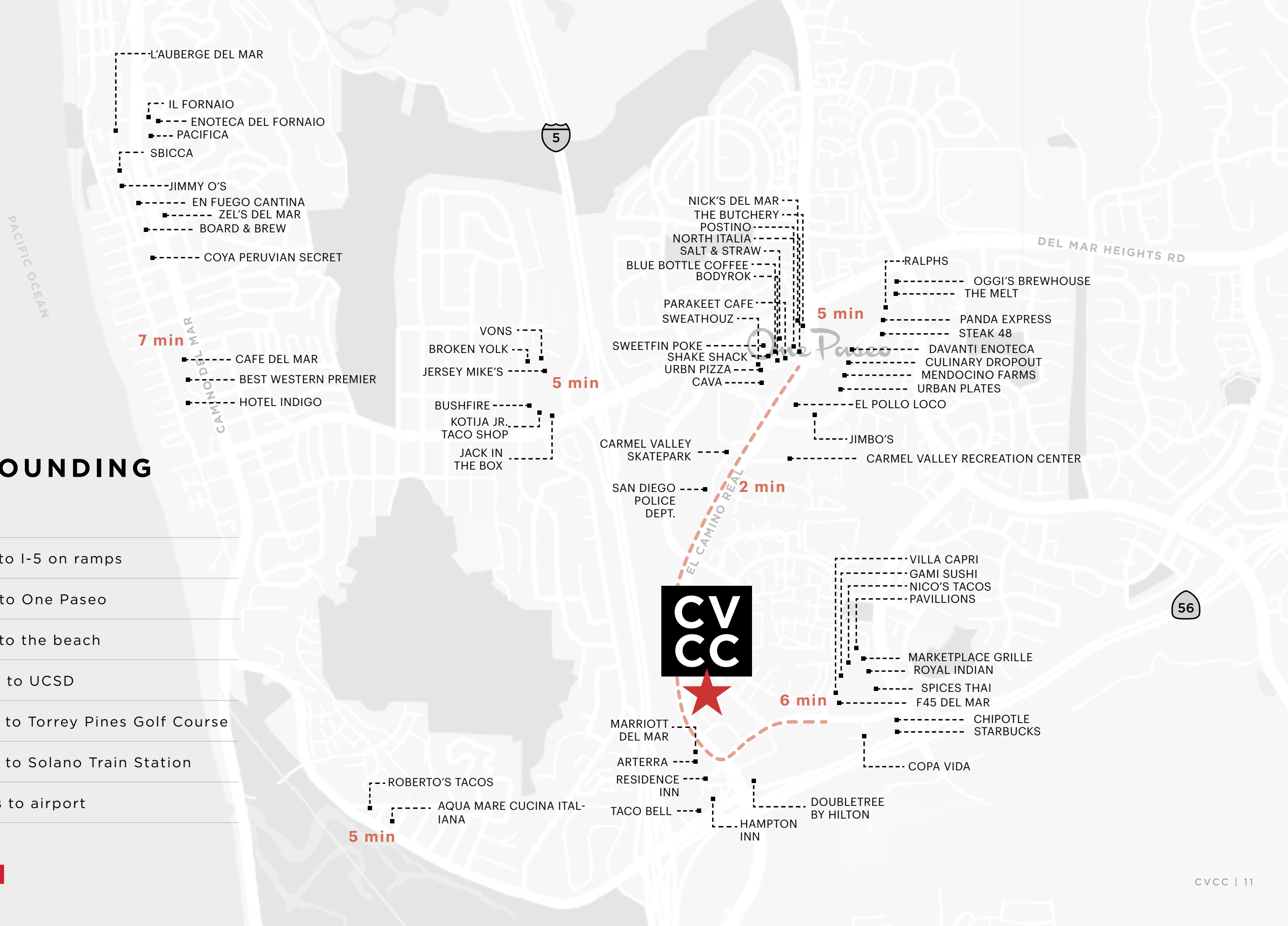
9 minutes to the beach

10 minutes to UCSD

13 minutes to Torrey Pines Golf Course

18 minutes to Solano Train Station

25 minutes to airport





One Paseo

Experience North County's most dynamic food and drink scene just minutes away. One Paseo offers San Diego's professionals a prime location with access to the best retailers and chefs in town. Enjoy a vibrant mix of dining and shopping options that make One Paseo the ultimate destination for work and play.



NOW OPEN

- | | |
|--------------------|-------------------|
| Alcheme Health | Rivian |
| Blue Bottle Coffee | Roark |
| BodyRok | Salt & Straw |
| Bowery | Sephora |
| CAVA | Serena & Lily |
| Color Counter | Shake Shack |
| Drybar | Shop Good |
| Faherty | South of Nick's |
| Fjällräven | Specs Optometry |
| goop Kitchen | SusieCakes |
| Jan's Health Bar | Sweetfin Poke |
| lululemon | SWTHZ |
| Marrow Fine | The Butchery |
| Muzukiyama Sushi | The Great |
| Nick's Del Mar | Urban Beach House |
| North Italia | urbn Pizza |
| Parakeet Cafe | Van De Fort |
| Pigment | Whiskey + Leather |
| Postino | |

THE

KILROY

EXPERIENCE



REDEFINING PLACES FOR NEW WORK

Kilroy Realty is a leading West Coast real estate company, with over ~25M SF of operating portfolio and development pipeline, focused on creating sustainable, high-quality workplaces that support tenant well-being and contribute positively to the environment and community.

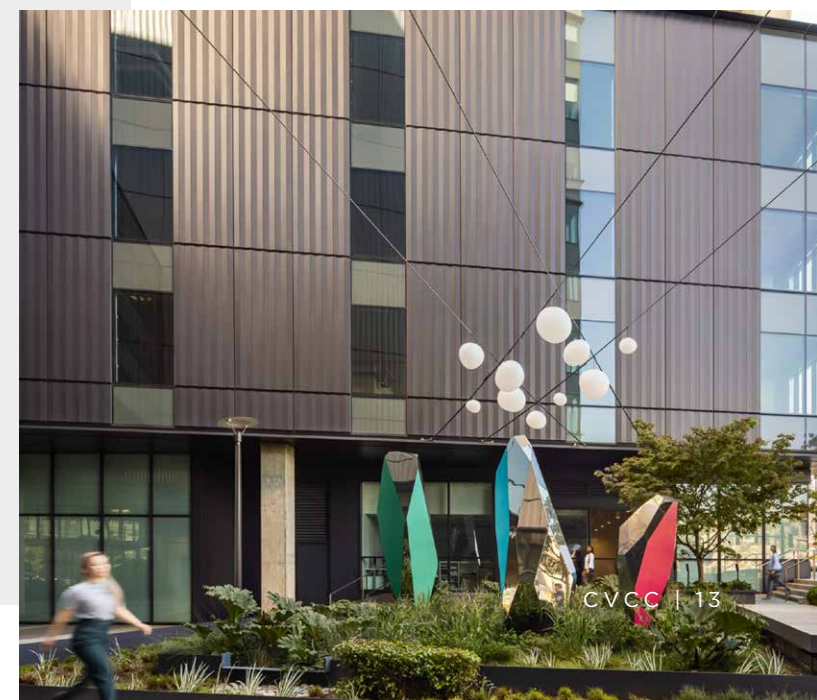
KILROY

SUSTAINABLE, INNOVATIVE DESIGN

- Kilroy properties emphasize sustainable design and practices, aligning with tenants' environmental goals.
- Buildings feature top-tier amenities, along with retail, public art, and community spaces, creating dynamic environments for work and leisure.

TENANT-FOCUSED MANAGEMENT

- Kilroy's property management approach includes sustainability-focused programs and proactive support to enhance tenants' experience.
- Workspaces are designed to promote employee well-being and foster a sense of community, making them attractive to companies in tech, media, life sciences, and other innovative industries.



KILROY IS DRIVING ENVIRONMENTAL PROGRESS THROUGH DESIGN & OPERATIONS

Kilroy differentiates itself through an unmatched focus on sustainability and wellness. Kilroy properties are designed to the highest standards, with numerous LEED and WELL certifications, carbon-neutral operations since 2020, and extensive energy efficiency initiatives.

Our sustainability efforts are broad, and include a focus on energy, carbon, water, waste, health & wellness, and stakeholder engagement. We identify climate change as both a risk and an opportunity to our business and we build these factors into our strategy and risk management efforts. Our sustainability programs contribute to long-term value creation and help shape our corporate strategy. This commitment to green practices positions Kilroy as a leader in environmentally responsible real estate.

ACHIEVEMENTS & ACCOLADES



Carbon Neutral Operations

Kilroy has achieved carbon neutral operations across our portfolio since 2020



Best in Building Health

Fitwel Excellence Award, Fitwel Champion Company, Most Certifications of All Time, 2019-2022



Energy Star

Partner of the Year, 2014-2025
Sustained Excellence, 2016-2023



Newsweek

Listed on America's Most Responsible Companies, 2020-2025



GRESB

#1 in Development (Diversified), Regional Sector Leader for Americas, 2022-2023
5-Star Rating, 2015-2023



Green Lease Leaders

Leader, 2014-2024
Gold Level, 2018-2024
Champion of the Decade, 2024



US EPA Green Power Partnership

Member of National Top 100 Green Power Users, 2021-2024



Bloomberg Gender-Equality Index

Member, 2020-2023

Learn more: kilroyrealty.com/sustainability

12225 + 12235 EL CAMINO REAL, SAN DIEGO, CA 92130



MICHAEL CASSOLATO

lic. 01893847

+1 858 546 5434

michael.cassolato@cushwake.com

BRETT WARD

lic. 01426040

+1 858 546 5470

brett.ward@cushwake.com

kilroyrealty.com | socials   



©2026 Cushman & Wakefield. All rights reserved. The information contained in this communication is strictly confidential. This information has been obtained from sources believed to be reliable but has not been verified. NO WARRANTY OR REPRESENTATION, EXPRESS OR IMPLIED, IS MADE AS TO THE CONDITION OF THE PROPERTY (OR PROPERTIES) REFERENCED HEREIN OR AS TO THE ACCURACY OR COMPLETENESS OF THE INFORMATION CONTAINED HEREIN, AND SAME IS SUBMITTED SUBJECT TO ERRORS, OMISSIONS, CHANGE OF PRICE, RENTAL OR OTHER CONDITIONS, WITHDRAWAL WITHOUT NOTICE, AND TO ANY SPECIAL LISTING CONDITIONS IMPOSED BY THE PROPERTY OWNER(S). ANY PROJECTIONS, OPINIONS OR ESTIMATES ARE SUBJECT TO UNCERTAINTY AND DO NOT SIGNIFY CURRENT OR FUTURE PROPERTY PERFORMANCE. COE-PM-West-02.6.2026